

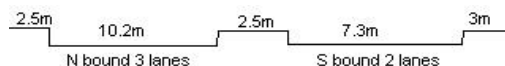
YEAR 2020

COVERAGE (B) STATION 6214

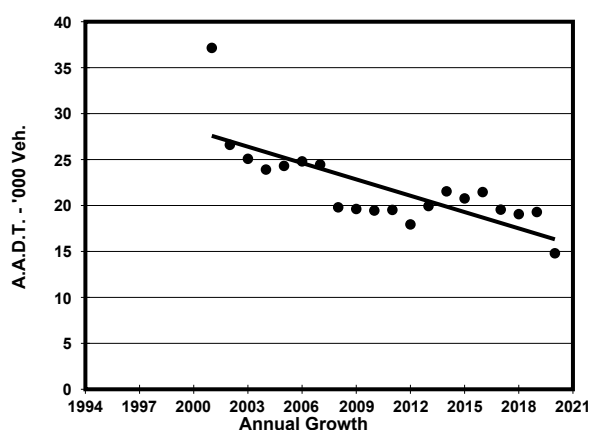
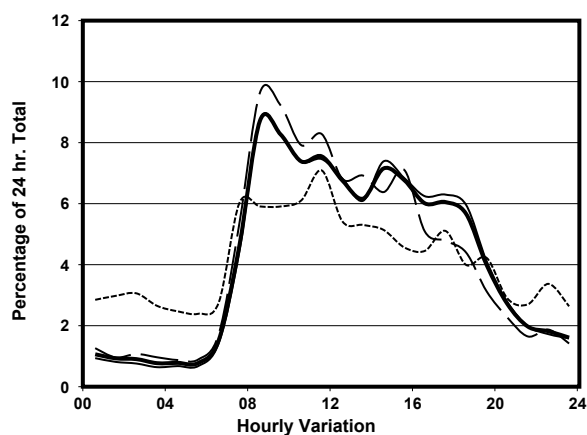
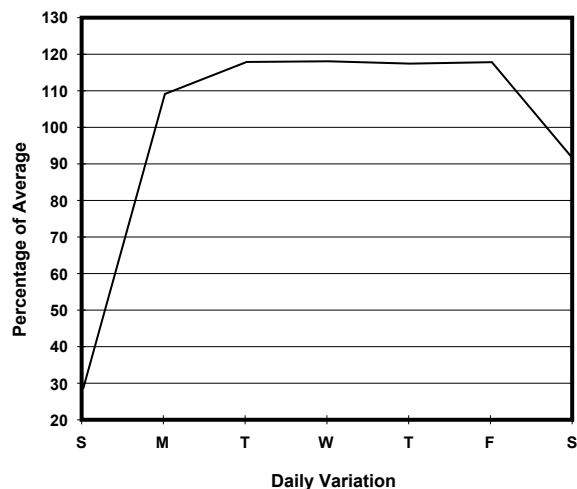
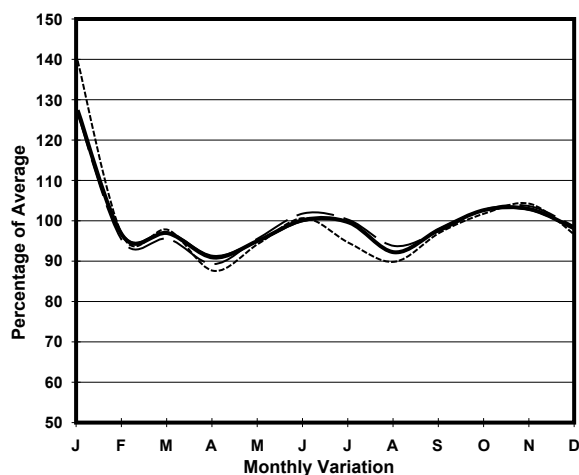
ROAD NETWORK MAJOR

ROAD TYPE LOCAL DISTRIBUTOR

LINK CONTAINER PORT RD S (from NORTH OF KWAI CHUNG INT to SOUTH OF KWAI CHUNG INT)



## 1. TRAFFIC FLOW VARIATION AND GROWTH



— All day      — Mon.- Fri.      ..... Sat.      - - - - - Sun.

## 2. TRAFFIC CHARACTERISTICS (BY DIRECTION)

Parameter	All - Day	Mon. - Fri.	Sat.	Sun.
<b>SOUTH BOUND</b>				
A.A.D.T.	6890	8350	6390	1940
R 12 / 24 - %	81.6	82.3	82.5	64.8
R 16 / 24 - %	91.8	92.8	90.6	77.3
AM Peak Hour	0800-0900	0800-0900	0800-0900	0700-0800
One-way flow at AM peak hour	560	670	600	120
T - % (AM)	-	42.1	-	-
PM Peak Hour	1700-1800	1700-1800	1600-1700	1700-1800
One-way flow at PM peak hour	450	570	360	110
T - % (PM)	-	45.4	-	-
Prop.of commercial vehicles - 16 hr.	-	45.9	-	-
<b>NORTH BOUND</b>				
A.A.D.T.	7910	9480	7580	2480
R 12 / 24 - %	80.8	81.5	81.4	65.2
R 16 / 24 - %	91.5	92.2	91	78.9
AM Peak Hour	0800-0900	0800-0900	0800-0900	0900-1000
One-way flow at AM peak hour	740	890	750	160
T - % (AM)	-	46.3	-	-
PM Peak Hour	1700-1800	1600-1700	1700-1800	1700-1800
One-way flow at PM peak hour	450	560	370	110
T - % (PM)	-	64.3	-	-
Prop.of commercial vehicles - 16 hr.	-	55.5	-	-

## 3. OTHER INFORMATION AND COMMENT

**4. Vehicle classification and occupancy - Monday to Friday**

Time		Class of vehicle									
		Motor Cycle	Private Car	Taxi	Private LB	PLB	Goods veh.		Non Fr. Bus	Fr. Bus	
							Light	M & H		SD	DD
0700-0800	Pro	2.8	7.7	11.1	0.0	1.5	27.5	46.9	2.5	0.0	0.0
	Ocp	1.0	1.3	1.6	0.0	8.8	1.4	1.1	17.9	0.0	0.0
0800-0900 Peak hour	Pro	3.2	14.9	15.8	0.0	0.7	21.1	41.4	3.0	0.0	0.0
	Ocp	1.1	1.3	1.8	0.0	13.3	1.4	1.2	18.9	0.0	0.0
0900-1000	Pro	1.0	14.7	8.7	0.5	1.0	24.6	48.3	1.2	0.0	0.0
	Ocp	1.0	1.2	1.8	4.5	7.3	1.5	1.2	1.0	0.0	0.0
1000-1100	Pro	1.4	9.4	5.4	0.0	0.9	28.8	52.9	1.2	0.0	0.0
	Ocp	1.0	1.2	2.0	0.0	4.5	1.4	1.2	1.0	0.0	0.0
1100-1200	Pro	0.9	5.9	4.4	0.3	0.9	33.4	54.0	0.3	0.0	0.0
	Ocp	1.0	1.1	1.9	2.0	10.0	1.4	1.2	6.0	0.0	0.0
1200-1300	Pro	0.0	12.6	7.2	0.6	0.6	27.3	51.4	0.3	0.0	0.0
	Ocp	0.0	1.3	1.7	1.0	7.0	1.4	1.2	1.0	0.0	0.0
1300-1400	Pro	0.6	12.2	4.2	0.3	0.6	27.7	53.9	0.6	0.0	0.0
	Ocp	1.0	1.5	2.1	3.0	6.5	1.4	1.1	1.0	0.0	0.0
1400-1500	Pro	0.8	10.4	4.3	1.3	0.8	27.8	53.5	1.1	0.0	0.0
	Ocp	1.0	1.2	2.0	2.2	7.7	1.4	1.2	1.0	0.0	0.0
1500-1600	Pro	0.6	9.6	3.1	0.3	1.1	28.7	56.5	0.3	0.0	0.0
	Ocp	1.0	1.2	1.5	1.0	4.8	1.3	1.1	1.0	0.0	0.0
1600-1700	Pro	1.5	11.0	4.9	0.3	0.6	26.7	53.5	1.5	0.0	0.0
	Ocp	1.0	1.1	1.9	2.0	5.0	1.3	1.1	2.4	0.0	0.0
1700-1800	Pro	4.2	10.6	4.7	0.6	0.8	25.8	50.0	3.3	0.0	0.0
	Ocp	1.1	1.3	1.8	1.0	5.0	1.4	1.1	17.8	0.0	0.0
1800-1900	Pro	3.6	26.1	6.9	0.3	0.7	17.3	40.9	4.2	0.0	0.0
	Ocp	1.0	1.1	1.5	1.0	14.5	1.4	1.1	25.6	0.0	0.0
1900-2000	Pro	2.2	23.9	19.6	0.0	1.6	15.8	34.2	2.7	0.0	0.0
	Ocp	1.0	1.2	1.7	0.0	4.3	1.2	1.1	14.2	0.0	0.0
2000-2100	Pro	4.5	16.7	17.9	0.6	2.6	11.5	46.2	0.0	0.0	0.0
	Ocp	1.0	1.1	1.4	1.0	5.3	1.3	1.1	0.0	0.0	0.0
2100-2200	Pro	0.8	24.0	16.0	0.0	1.6	19.2	36.8	1.6	0.0	0.0
	Ocp	1.0	1.2	1.6	0.0	5.0	1.3	1.1	1.0	0.0	0.0
2200-2300	Pro	7.2	14.4	13.5	0.0	0.9	18.9	44.1	0.9	0.0	0.0
	Ocp	1.0	1.3	1.6	0.0	1.0	1.2	1.0	1.0	0.0	0.0
16 hours	Pro	1.9	13.0	8.1	0.3	1.0	25.2	49.0	1.6	0.0	0.0
	Ocp	1.0	1.2	1.7	2.0	7.0	1.4	1.1	13.4	0.0	0.0

**Legend: Pro.** Proportion of vehicles in % (Sum may not add up to 100% due to figure rounding)\*

**Ocp.** Average occupancy of vehicles including both driver and passengers\*

**M&H** Medium and Heavy

\* All traffic data are collected from combined bounds